

85-0465
 Title: BOARD, DEMO, A4988ET
 Originator: Joyce Roche

**DESIGN COVER SHEET
 ROHS COMPLIANT PCB**

6/16/2009
 Page 1 of 1

			Design Rev >	OI							
Doc	Size	Format	Name, Description	Sub - Document Rev							
000-ASY	A	PDF	PCB Assembly Drawing	1							
000-BOM	A	PDF	Bill of Materials	1							
000-SCH	A	PDF	Schematic	1							
001-FAB	N/A	ZIP	PCB Fabrication files	1							
001-BLD	A	ZIP	PCB Assembly Build	1							

ALL COMPONENTS MUST BE ROHS COMPLIANT.

USE LEAD FREE SOLDER

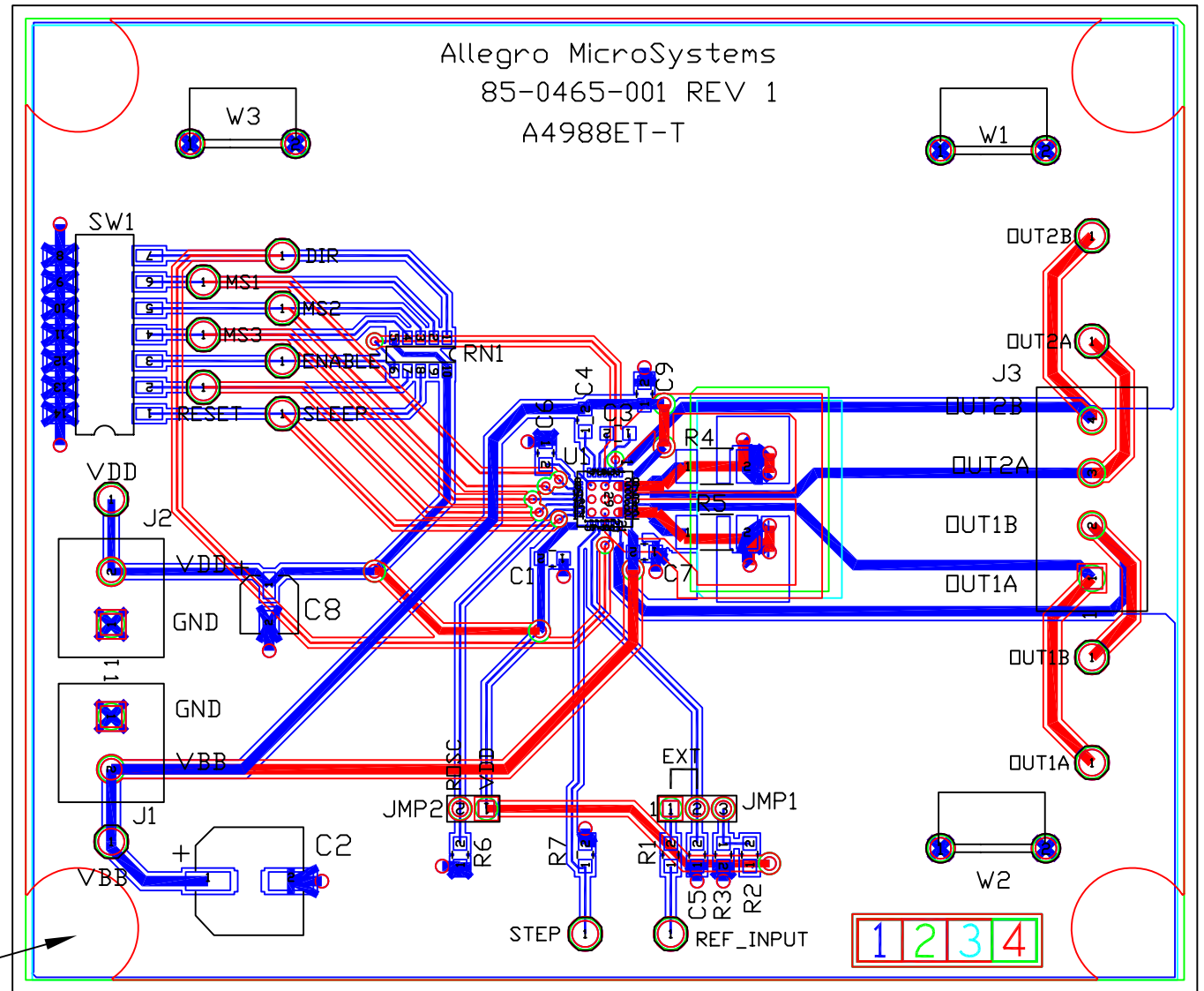
VIEW IS TOP SILKSCREEN

THIS BOARD HAS 4 LAYERS

U1 THERMAL PAD SHOULD BE SOLDERED DIRECTLY TO THE EXPOSED SURFACE ON THE PCB

MAKE W1, W2 & W3 WIRES A FINISHED HEIGHT OF .25"-.4" FROM THE BOARD.

PLACE BUMPONS ON BOTTOM 4 CORNERS OF PC BOARD.

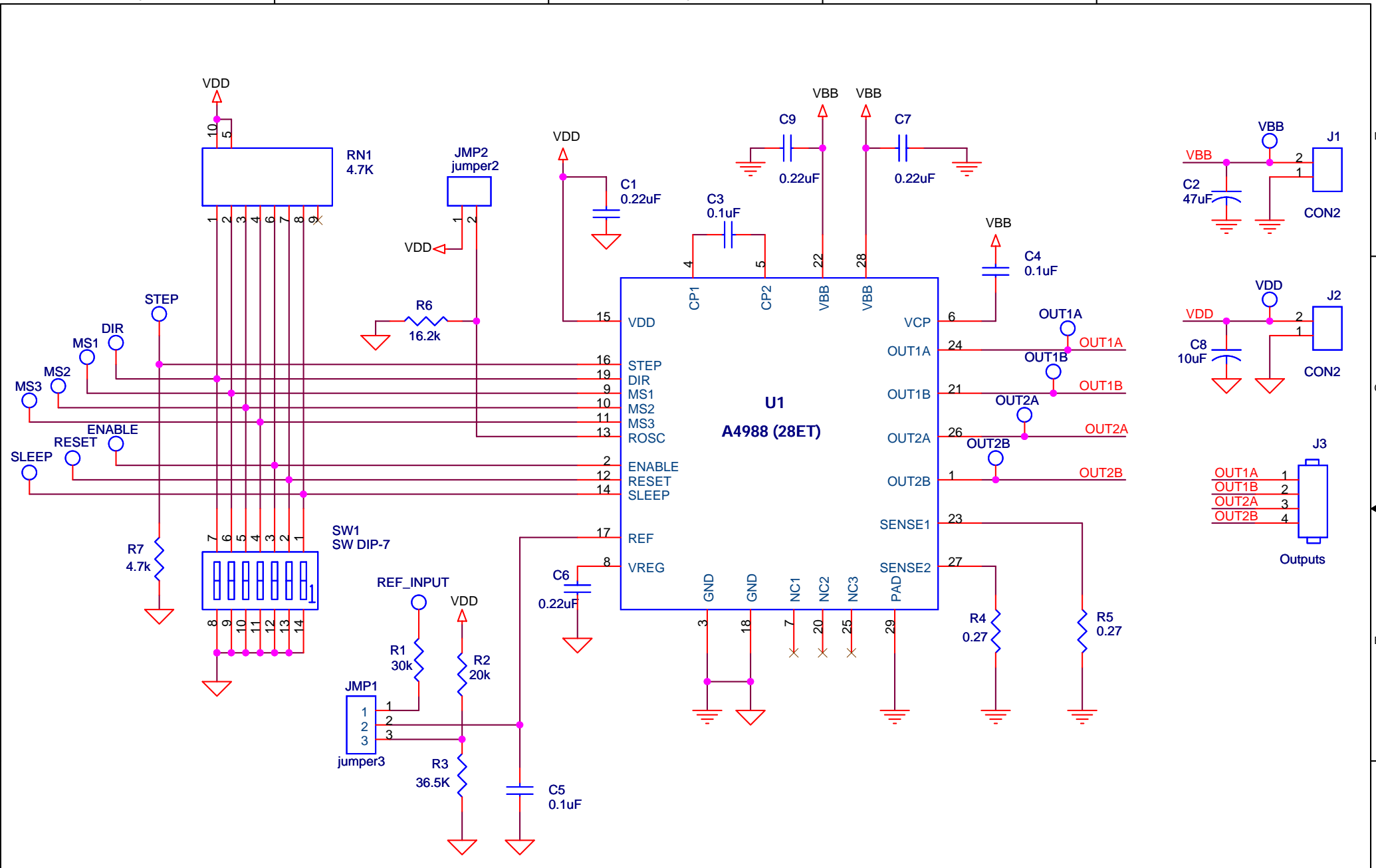


TOLERANCE UNLESS OTHERWISE SPECIFIED +/-

TITLE BOARD, DEMO, A4988ET			
DRAWING NO. 85-0465-000-ASY		REV. 1	
T E Joyce Roche			
DO NOT SCALE DRAWING		DATE 06/17/09	
SIZE A	SCALE NONE	SHEET 1	of 1

Item	Qty	Part Reference	Value	Manufacturer	Manufacturer Number	Description	PCB Footprint
1	4	C1,C6,C7,C9	0.22uF	Kemet	C0805C224K5RACTU	Cap, 50V, X7R, CER,10%	smd0805
2	1	C2,	47uF	Panasonic	EEE-1HA470P	Cap, 50V, VS,ELECT, SMD	smd400elec
3	1	C8	10uF	Panasonic	EEE-1EA100SR	Cap, 25V, VS,ELECT, SMD	smd200elec146
4	3	C3,C4,C5	0.1uF	Kemet	C0805C104K1RACTU	Cap, 100V, X7R, CER,10%	smd0805
5	15	DIR,ENABLE,MS1,MS2,MS3,OUT1A,OUT1B,OUT2A,OUT2B,REF_INPUT,RESET,SLEEP,STEP,VBB,VDD	tp	Keystone Electronics	5005	RED, Test Point PC Compact .063"D	tp
6	1	JMP1	jumper3	Samtec Inc	TSW-103-07-G-S	Header 1" SGL, 3POS	JUMPER3
7	2	J1, J2	CON2	On Shore Technology	ED120/2DS	Terminal Block, 5.08mm, vert. 2 pos.	tb-ed120-2
8	1	J3	Outputs	On Shore Technology	ED120/4DS	Terminal Block, 5.08mm, vert. 4 pos.	tb-ed120-4
9	1	JMP2	jumper2	Samtec Inc	TSW-102-07-G-S	Header 1" SGL, 2POS	JUMPER2
10	1	R1	30.0K	Yageo Corp	RC0805FR-0730KL	RES, 1/8W 1% 0805 SMD	smd0805
11	1	R2	20.0K	Yageo Corp	RC0805FR-0720KL	RES, 1/8W 1% 0805 SMD	smd0805
12	1	R3	36.5K	Rohm	MCR10EZHF3652	RES, 1/8W 1% 0805 SMD	smd0805
13	2	R4,R5	0.27	Panasonic	ERJ-1TROJR27U	RES, SMD, 2512, 1W, 5%	smd2512
14	1	R6	16.2k	Yageo Corp	RC0805FR-0716K2L	RES, 1/8W 1% 0805 SMD	smd0805
15	1	R7	4.7k	Rohm	MCR10EZHF4701	RES, 1/8W 1% 0805 SMD	smd0805
16	1	RN1	4.7K	CTS Corporation	745C101472JPTR	Res Array,10pin,SMD,BUS	smd10p_126x50
17	1	SW1	SW DIP-7	ITT Industries/ C&K Div.	SDA07H1SBD	Dip Switch,SMD,7pos	smd_dip14_3
18	1	U1	A4988SET	Allegro MicroSystems		DMOS Microstepping Driver with Translator	mlp-28_5x5
19	3	W1, W2,W3	GND BUS	any	any	20 AWG Solid Bus Wire, about 1"long Finished height of .25"- .4" from board	tp4
20	4		Bumpons	3m/ESM	SJ5003	Bumpon, Hemisphere, Black Place on bottom 4 corners of PC board	
21	2	For JMP1 and JMP2	shunt	Sullins Electronics	STC02SYAN	CONN,JUMPER SHORTING TIN JMP1 PLACE BETWEEN PINS 2 AND 3	
22	1	PCB	85-0465-001			A4988ET-T, Printed Circuit Board, ROHS	

REPLACEMENT FOR CAPACITORS AND RESISTORS MUST BE EQUIVALENT TO LISTED COMPONENT.



Title		
BOARD, DEMO, A4988ET		
Size	Document Number	Rev
A	85-0465-000-SCH	1
Date:	Wednesday, May 27, 2009	Sheet 1 of 1